



S SERIES STUDIO MONITOR / ON-WALL SPEAKERS
SPECIFICATIONS & FEATURES



S81 & S82

Features

Custom built x-over network

The S81 & S82 tweeter array uses advanced waveguide unit alignment technology to make accurate and natural high frequency reproduction.

Custom tuned and ported cabinet made from high quality MDF

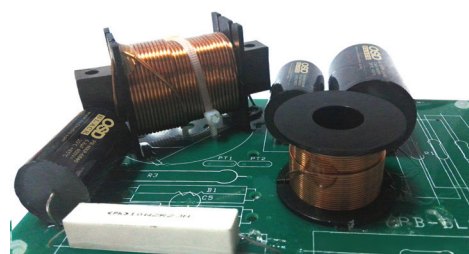
Mounting brackets and feet included for different home theater custom installation requirements.



Triple Silk Dome Tweeter Array

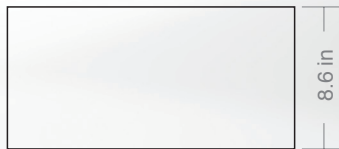
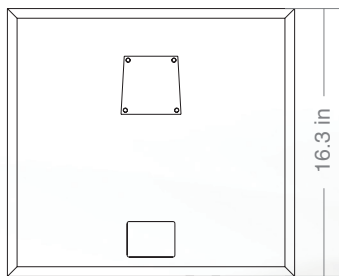
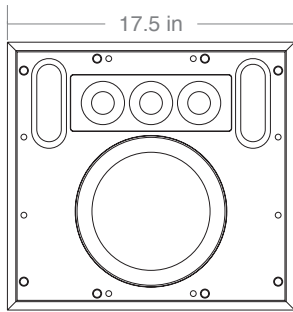


8" Long Wood Fiber Inter-thread
Double Compressed Woofer Cone



Custom Second Order X-Over

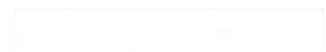




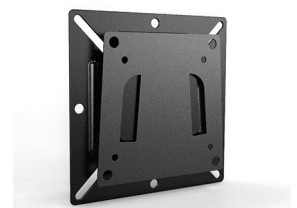
Specifications:

S81

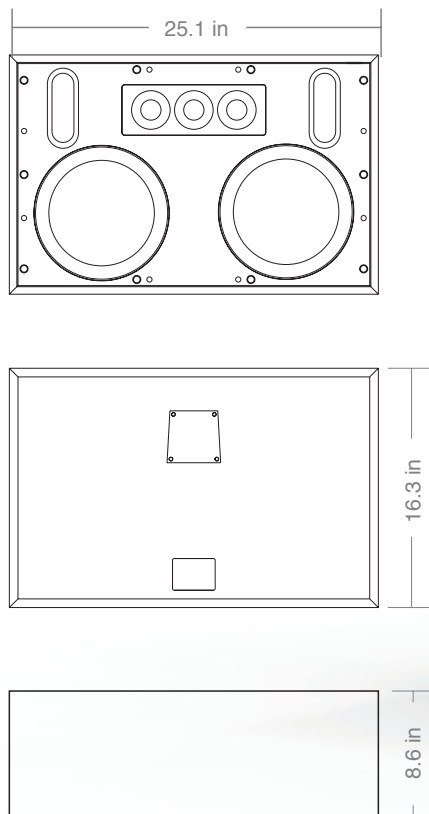
8" Studio Monitor / On-Wall Speaker
Woofer: 8" Long Wood Fiber Inter-thread
Double Compressed Cone
Tweeter: Triple Array Silk Dome
X-Over: 12db Second Order at 2400hz
Cabinet: Front Inverted With High Transparent Grille
Gold Plated Speaker Terminals
Power Handling: 250W
Sensitivity: 93dB 1w/1m
Max SPL: 100dB
Freq Response: 40Hz - 30kHz
Impedance: 4 ohms
Finish: Black or White PUV Coated Surface
Mounting Brackets Included
Dimensions: HxWxD 16.3" x 17.5" x 8.6"



Foot Pads



Wall Mount Bracket



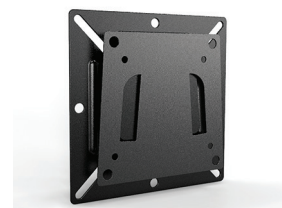
Specifications:

S82

8" Studio Monitor / On-Wall Speaker
Woofer: Dual 8" Long Wood Fiber Inter-thread
Double Compressed Cone
Tweeter: Triple Array Silk Dome
X-Over: 12db Second Order at 2500hz
Cabinet: Front Inverted With High Transparent Grille
Gold Plated Speaker Terminals
Power Handling: 300W
Sensitivity: 94dB 1w/1m
Max SPL: 102dB
Freq Response: 38Hz - 30kHz
Impedance: 4 ohms
Finish: Black or White PUV Coated Surface
Mounting Brackets Included
Dimensions: HxWxD 16.3" x 25.1" x 8.6"



Foot Pads



Wall Mount Bracket

S84 & S85

Features

The woofers cone material is constructed from a double compressed blend of wood and biochitin fiber. This process gives the woofer unmatched dynamic range and sound quality.

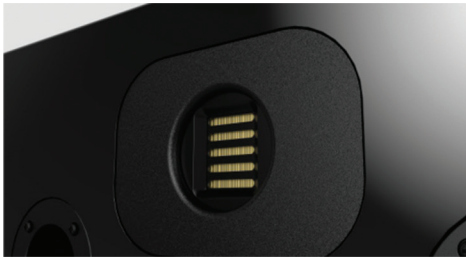
The S85 midrange driver uses a gold-plated phase cone to enhance performance, thus making sound delivery more accurate and directional to the listening area.

The Haier AMT (Air Motion Transformer) Tweeter delivers superior sound quality with pinpoint accuracy and flawless reproduction.

Custom built second & third order x-over networks

Custom tuned and ported cabinet made from high quality MDF

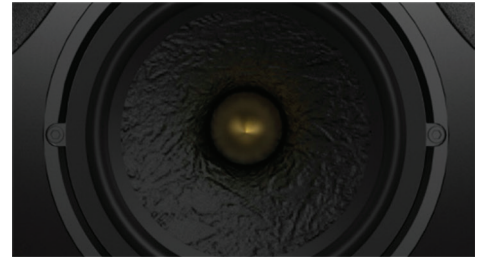
Mounting brackets and feet included for different home theater custom installation requirements.



Haier AMT
Tweeter

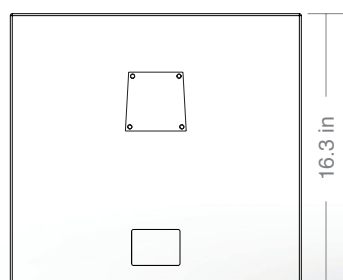
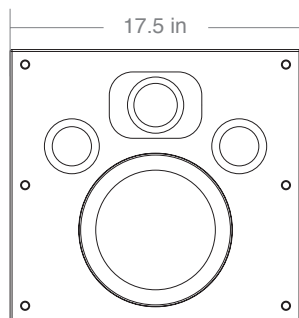


8" Long Wood Fiber Inter-thread
Double Compressed Woofer Cone



Mid Range
Phase Cone





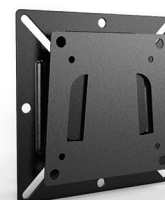
Specifications:

S84

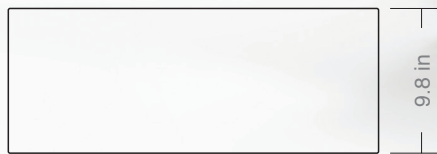
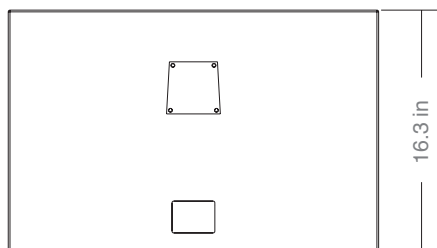
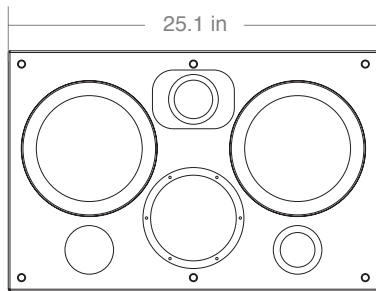
8" Studio Monitor / On-Wall Speaker
 Woofer: 8" Long Wood Fiber Inter-thread
 Double Compressed Cone
 Tweeter: AMT Ribbon Tweeter
 X-Over: 12db Second Order at 2400hz
 Cabinet: Front Inverted With High Transparent Grille
 Gold Plated Speaker Terminals
 Power Handling: 250W
 Sensitivity: 93dB 1w/1m
 Max SPL: 100dB
 Freq Response: 40Hz - 30kHz
 Impedance: 4 ohms
 Finish: Black or White Matte Painted
 Mounting Brackets Included
 Dimensions: HxWxD 16.3" x 17.5" x 9.8"



Foot Pads



Wall Mount Bracket



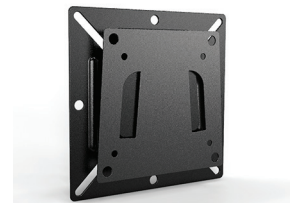
Specifications:

S85

8" Studio Monitor / On-Wall Speaker
 Woofer: Dual 8" Long Wood Fiber Inter-thread
 Double Compressed Cone
 Midrange: 6.5" Long Wood Fiber
 Tweeter: AMT Ribbon Tweeter
 X-Over: 12db Third Order at 1200Hz, 4000Hz
 Cabinet: Front Inverted With High Transparent Grille
 Gold Plated Speaker Terminals
 Power Handling: 300W
 Sensitivity: 94dB 1w/1m
 Max SPL: 102dB
 Freq Response: 36Hz - 30kHz
 Impedance: 4 ohms
 Finish: Black or White Matte Painted
 Mounting Brackets Included
 Dimensions: HxWxD 16.3" x 25.1" x 9.8"



Foot Pads



Wall Mount Bracket

All Optimal Speaker Design speaker products have Limited Lifetime Warranty against defects in materials and workmanship. Proof of purchase must accompany all claims. During the warranty period Optimal Speaker Design will replace any defective part and correct any defect in workmanship without charge for either parts or labor. Optimal Speaker Design may replace returned speakers with a product of equal value and performance. In such cases, some modification to the mounting may be necessary and are not Optimal Speaker Designs responsibility.

For this warranty to apply, the unit must be installed and used according to its written instructions. If necessary, repairs must be performed by Optimal Speaker Design. The unit must be returned to Optimal Speaker Design at the owner's expense and with prior written permission. Accidental damage and shipping damage are not considered defects, nor is damaged resulting from abuse or from servicing performed by an agency or person not specifically authorized in writing by Optimal Speaker Design.

Optimal Speaker Design sells products only through authorized dealers and distributors to ensure that customers obtain proper support and service. Any Optimal Speaker Design product purchased from an unauthorized dealer or other source, including retailers, mail over dealers and on-line sellers will not be honored or serviced under existing Optimal Speaker Design warranty policy. Any sale of product by an unauthorized source or other manner not authorized by Optimal Speaker Design shall void the warranty on the applicable product.

Damage to or destruction of components due to application of excessive power voids the warranty on those parts. In these cases, repairs will be made on the basis of the retail value of the parts and labor. To return for repairs, you must email customer service at RMA@audiogeargroup.com for a Returned Merchandise Authorization (RMA) number# then the unit must be shipped to Optimal Speaker Design at the owner's expense, along with a note explaining the nature of service required. Be sure to pack the speaker(s) in a corrugated container with at least 3 inches of resilient material to protect the unit from damage in transit.

This Warranty Does Not Cover: Damage caused by abuse, accident, misuse, negligence, or improper operation (installation) • Any products that have been altered or modified • Any product whose identifying number of decal, serial #, etc. has been altered, defaced or removed • Normal wear and maintenance.